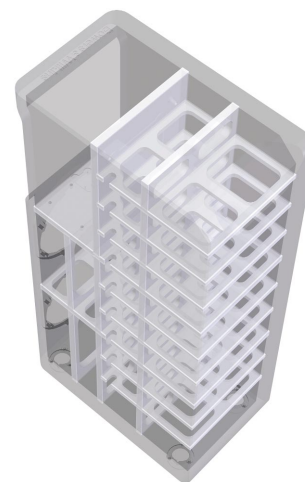


**Surround speaker: CT8 DS**

A typical CT800 installation will feature two or more vertical surround sound speakers at the rear and sides to generate an authentically three-dimensional listening experience. To maximise the 3D effect, the CT8 DS incorporates additional side-firing midrange drivers for the option of dipole operation.

**Cabinet bracing**

Sound with backbone demands a speaker with backbone. In a system with as much power as this, the physical forces exerted on the cabinet by the air movements inside it are huge. To hold the cabinet walls in place and avoid the kind of vibrations and flexures that can taint the sound, each speaker contains B&W's double thickness Matrix™ internal bracing system of interlocking anechoic cells. This indomitable skeleton – like that of a building – dissipates forces around the structure and creates a single rock solid unit.



Technical features	Kevlar® brand fibre cone FST™ midrange Composite sandwich cone bass Dipole/monopole option with 12V trigger switching Matrix cabinet Active bass crossover
Description	3-way monopole/ 2-way dipole selectable closed-box surround system
Frequency range	-6dB at 26Hz and 40kHz (monopole mode) -6dB at 25Hz and 22kHz (dipole mode)
Sensitivity	93dB spl (2.83V, 1m)
Nominal impedance	8Ω (minimum 4Ω)
Recommended amplifier power	25W – 120W into 8Ω on unclipped programme
Max. recommended cable impedance	0.1Ω
Dimensions	Height: 1100mm (43.3 in) Width: 325mm (12.8 in) Depth: 250mm (9.85 in)
Net weight	75kg (165 lb)
Finishes	Cabinet: Black Grille: Black